

Griffith College Cork



GRIFFITH COLLEGE

UNIVERSITY FOUNDATION PROGRAMME

Certificate in International Foundation Studies

(Programme, fees, and scholarships information)

Qualification frameworks - Level 5

Entry Requirements

Learners must hold a certificate of secondary education at GCSE Level or equivalent to include a minimum pass grade in mathematics and a minimum pass grade in four other subjects. Learners must have an English level of CERFL B1+/ IELTS 5.0/ IGCSE D or equivalent.

What will I study? **Semester-order dependent on intake*

Semester 1*	Semester 2*
<p>Core subjects</p> <p>English 1 Learning, Study and Communication Skills Information Technology 1 Mathematics 1</p>	<p>Core subjects</p> <p>English 2 Information Technology 2 Mathematics 2</p>
<p>Electives (choose one)</p> <p>Business Physics</p>	<p>Electives (choose two)</p> <p>Accounting Chemistry Economics Biology</p>

Duration

	September intake	February intake
Total number of weeks	30 weeks	30 weeks
Number of vacation weeks	6 weeks	6 weeks
Number of teaching weeks	24 weeks	24 weeks
English requirement	CERFL B1+/ IELTS 5.0/ IGCSE D or equivalent	CERFL B1+/ IELTS 5.0/ IGCSE D or equivalent

Study mode

3 hours
One-to-one consultation sessions

12.5 hours
Lectures, laboratories and tutorials in other modules

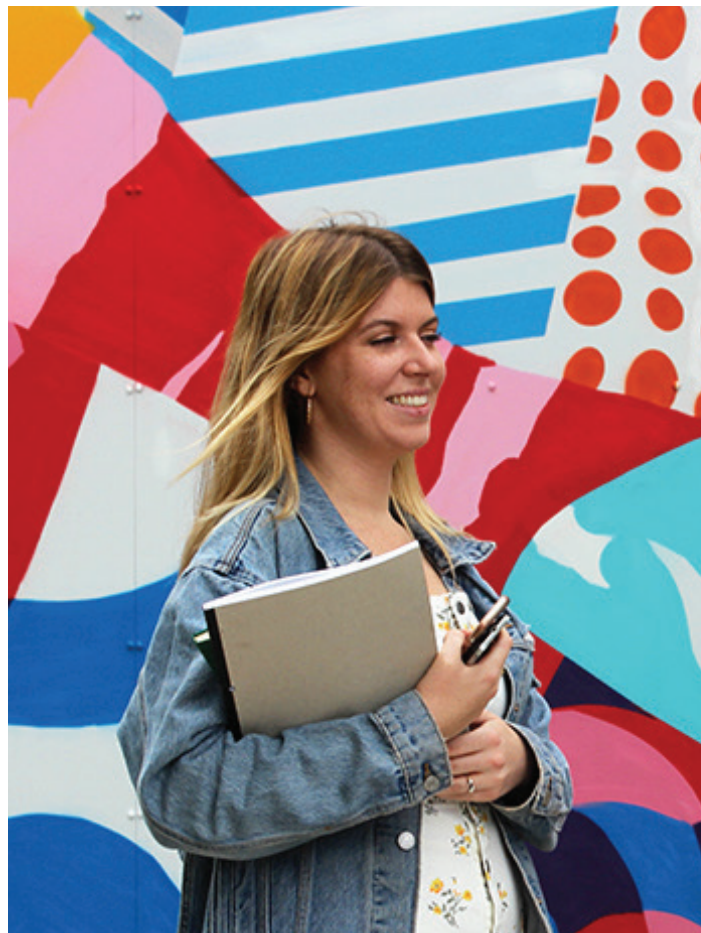


10 hours
English language

*** All intakes subject to minimum numbers.
** Subject to approval.*

Tuition Fees, Bursaries & Scholarships

Tuition Fee	12,000€
Other Charges	Also known as A.I.P Fees
Academic Administration Fee	250€
International Student Support Fee	300€
Protection of Enrolled Learner Fee	245€
QQI Award Fee Level 5	100€
Total A.I.P Fees	895€



Academic Merit Scholarships

is offered to international applicants who demonstrate a strong academic performance at the time of application. Scholarships are awarded to international applicants at the time of admission to Griffith College.

National Exams*	Academic Merit Scholarship Requirements					
	Level 0 1,000€	Level 1 3,000€	Level 2 4,000€	Level 3** 5,000€	Level 4** 6,000€	Level 5*** 8,000€
SPM	Minimum Entry Requirement	3Bs	5Bs	3As	5As	8As
NECO/WAEC /WASSCE /KCSE	Minimum Entry Requirement	3Bs	5Bs	3As	5As	8As
IGCSE	Minimum Entry Requirement	3Bs	5Bs	3As	4As	6As
Vietnam/ Indonesia/ China	Minimum Entry Requirement	>70%	>75%	>80%	>85%	>90%

*Selected countries.

**UG deposit of 2,000€ will be required.

***UG deposit of 4,000€ will be required.

AMS Level 3,4 or 5 available only where UG progression is to scholarship partners only.

Scholarship Partners*

Griffith College Certificate in International Foundation Studies is an accepted pathway to a number of third level education providers.



**Student applying to these institutions may avail of maximum Academic merit scholarship entitlement up to level 5*

Progression Partners**

Griffith College Certificate in International Foundation Studies is an accepted pathway to a number of third level education providers.



***Student applying to these institutions may avail of maximum Academic merit scholarship entitlement up to level 2*

Note

A large rectangular area with a red border and rounded corners, containing ten horizontal dashed lines for writing notes.